

ساختن فرمهای پیشرفته در ویژوال بیسیک

:

آن ویندوز نیست!

(())

Net2Phone 10.6.2

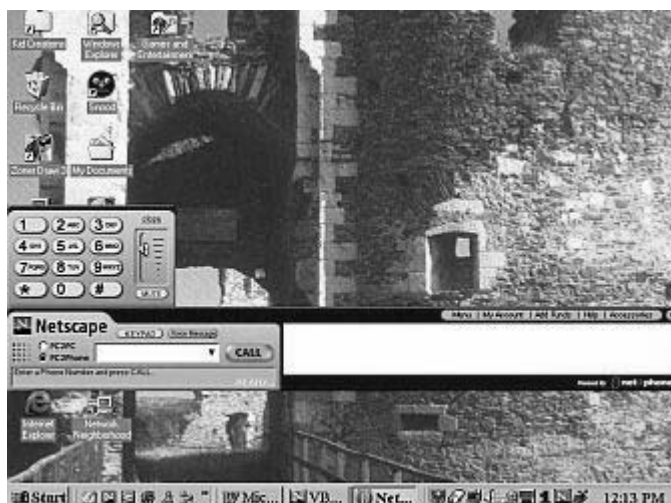
.() . L

VB

VB

API

VB



شکل (۱) یک مثال از یک پنجره طراحی شده بصورت دلخواه

اصول Region

Region . Region

Region

:

Region

.()

Region

GDI .

API

:

Region

Region

Region

```

        :
        Region
        Region
        Region VB
        Region
        VB
        Region
        Region
        Region
        Region
        Region
        API

```

حرکت به سمت دایره ها

```

CreateElliticRgn
Region
Region
Region
SetWindowRgn
Region
Region
Region
True
:

```

```

Public Declare Function CreateEllipticRgn _
    Lib "gdi32" (ByVal X1 As Long, _
        ByVal Y1 As Long, _
        ByVal X2 As Long, _
        ByVal Y2 As Long) As Long

Public Declare Function SetWindowRgn _
    Lib "user32" (ByVal hWnd As Long, _
        ByVal hRgn As Long, _
        ByVal bRedraw As Boolean) As Long

Public Sub CreateEllipseFromWindow(ByRef oWindow As Object)
    Dim lRight As Long
    Dim lBottom As Long
    Dim hRgn As Long
    With oWindow
        lRight = .Width / Screen.TwipsPerPixelX
        lBottom = .Height / Screen.TwipsPerPixelY
        hRgn = CreateEllipticRgn(0, 0, lRight, lBottom)
        SetWindowRgn .hWnd, hRgn, True
    End With
End Sub

Private Sub Form_Load()
    CreateEllipseFromWindow Me
End Sub

```

Twips

Screen.TwipsPerPixelY Screen.TwipsPerPixelX

VB

Region

VB

.()

Region



شکل ۲) آغاز یک پنجره بیضی شکل اختیاری

Region

اشکال واقعا غیر طبیعی

Region .

Region Region

CreatePolygonRgn API

Region

```
Public Type POINTAPI
    x As Long
    y As Long
End Type
```

```
Public Declare Function CreatePolygonRgn _
    Lib "gdi32" (lpPoint As POINTAPI, _
        ByVal nCount As Long, _
        ByVal nPolyFillMode As Long) As Long
```

```

Public Declare Function SetWindowRgn _
    Lib "user32" (ByVal hWnd As Long, _
        ByVal hRgn As Long, _
        ByVal bRedraw As Boolean) As Long

Public Sub CreatePolygon(ByRef oWindow As Object)
    Dim hRgn As Long
    Dim Points(0 To 5) As POINTAPI
    With oWindow
        'Set up some points
        Points(0).x = 0
        Points(0).y = 10
        Points(1).x = 220
        Points(1).y = 0
        Points(2).x = 200
        Points(2).y = 150
        Points(3).x = 50
        Points(3).y = 140
        Points(4).x = 25
        Points(4).y = 160
        Points(5).x = 0
        Points(5).y = 10
        'Create a region from the points
        hRgn = CreatePolygonRgn(Points(0), (UBound(Points) + 1), 2)
        SetWindowRgn .hWnd, hRgn, True
    End With
End Sub

Private Sub Form_Load()
    CreatePolygon Me
End Sub

```

POINTAPI

Region

nPolyFillMode

CreatePolygonRgn

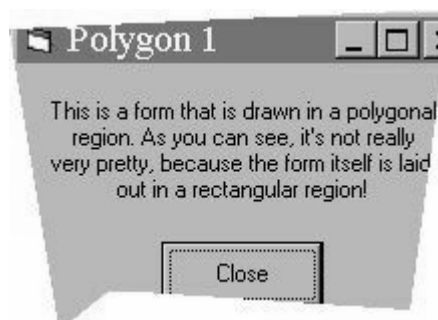
() ()

http://msdn.microsoft.com/library/en-us/gdi/regions_2z8l.asp.

()

(0,0)

Point(5)

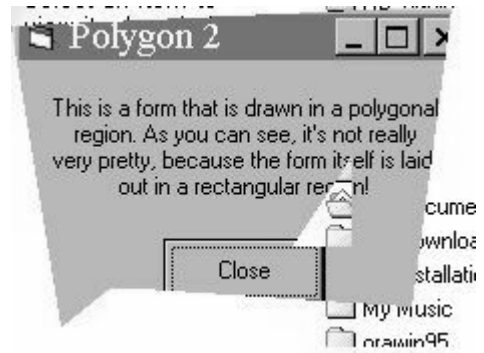


شكل ٣

```

        Region
        CreatePolygonRgn
        CreatePolygon
        Region
        Region
        ( )!
        ( HighTechForms Polygon 2 ).

```



شکل ۴

```

        Region
        HighTechForm
        ( ) "Hi!"

```



شکل ۵

```

        Region
        "Hi!"
        Region
        Region
        Hard-Coded
        (
        Twips
        Region
        :
        With oWindow
            lRight = .Width / Screen.TwipsPerPixelX
            lBottom = .Height / Screen.TwipsPerPixelY
        End With

```

lBottom lRight

مستطیل‌های واقعاً جذاب

CreateRectRgn

Region Region

CreateRoundRectRgn

:

```
Public Declare Function CreateRoundRectRgn _
    Lib "gdi32" (ByVal X1 As Long, _
        ByVal Y1 As Long, _
        ByVal X2 As Long, _
        ByVal Y2 As Long, _
        ByVal X3 As Long, _
        ByVal Y3 As Long) As Long

Public Declare Function SetWindowRgn _
    Lib "user32" (ByVal hWnd As Long, _
        ByVal hRgn As Long, _
        ByVal bRedraw As Boolean) As Long

Public Sub CreateRoundRectFromWindow(ByRef oWindow As Object)
    Dim lRight As Long
    Dim lBottom As Long
    Dim hRgn As Long
    With oWindow
        lRight = .Width / Screen.TwipsPerPixelX
        lBottom = .Height / Screen.TwipsPerPixelY
        hRgn = CreateRoundRectRgn(0, 0, lRight, lBottom, 40, 40)
        SetWindowRgn .hWnd, hRgn, True
    End With
End Sub

Private Sub Form_Load()
    CreateRoundRectFromWindow Me
End Sub
```

CreateEllipticRegion

CreateRoundRectRgn

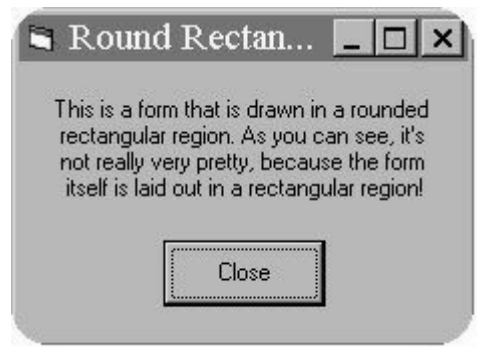
Region

().

Region

VB

Region



شکل ۶

فرمهای مجهز

Region

Region

Region

Region

Form_Load

```
Private Sub Form_Resize()  
    With Me  
        If .Width < 100 Then .Width = 100  
        If .Height < 2000 Then .Height = 2000  
    End With  
    CreateRoundRectFromWindow Me  
End Sub
```

Region

).
(
Region

Close

Region

Region

BorderStyle

Picture

Form_Load

Twips

```
Private Sub Form_Load()
    With Screen
        Height = 225 * .TwipsPerPixelY
        Width = 225 * .TwipsPerPixelX
    End With

    CreateEllipseFromWindow Me
End Sub
```

.().

Region
Ellipse 2



شکل ۷

Modal

True ShowInTaskBar

ReleaseCapture : API

:

.SendMessage

```
Public Const HTCAPTION = 2
Public Const WM_NCLBUTTONDOWN = &HA1
```

```
Public Declare Function ReleaseCapture _
    Lib "USER32" () As Long
```

```
Public Declare Function SendMessage _
    Lib "USER32" _
    Alias "SendMessageA" (ByVal hwnd As Long, _
        ByVal wParam As Long, _
```

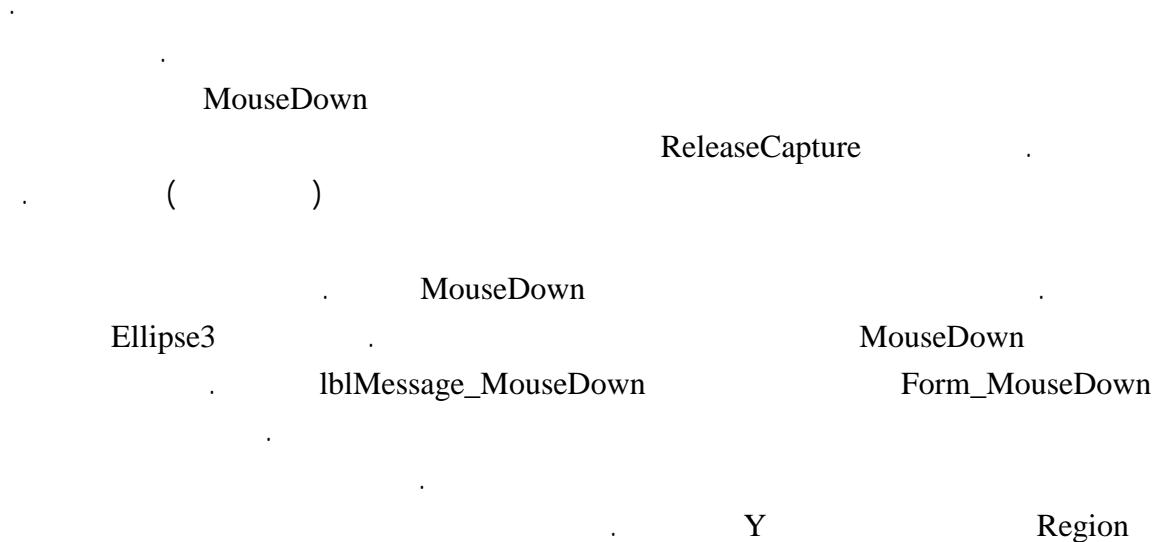


```

ByVal wParam As Long, _
ByVal lParam As Any) As Long

Private Sub Form_MouseDown(Button As Integer, Shift As Integer, X As Single,
Y As Single)
    Select Case Button
        Case vbLeftButton
            'Allow the form to be moved by dragging
            Call ReleaseCapture
            Call SendMessage(Me.hwnd, WM_NCLBUTTONDOWN, HTCAPTION, 0&)
    End Select
End Sub

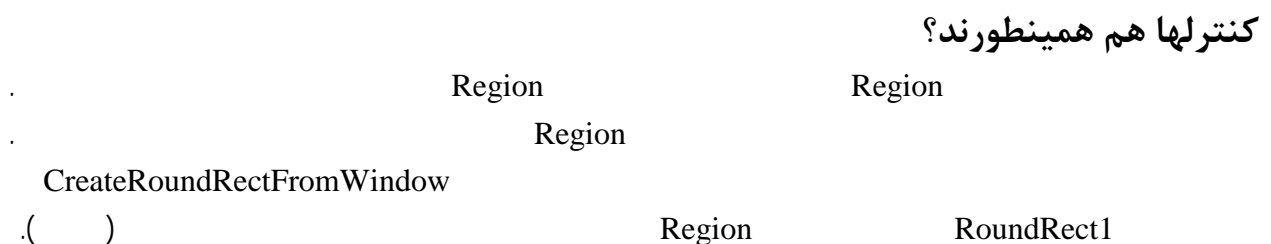
```



```

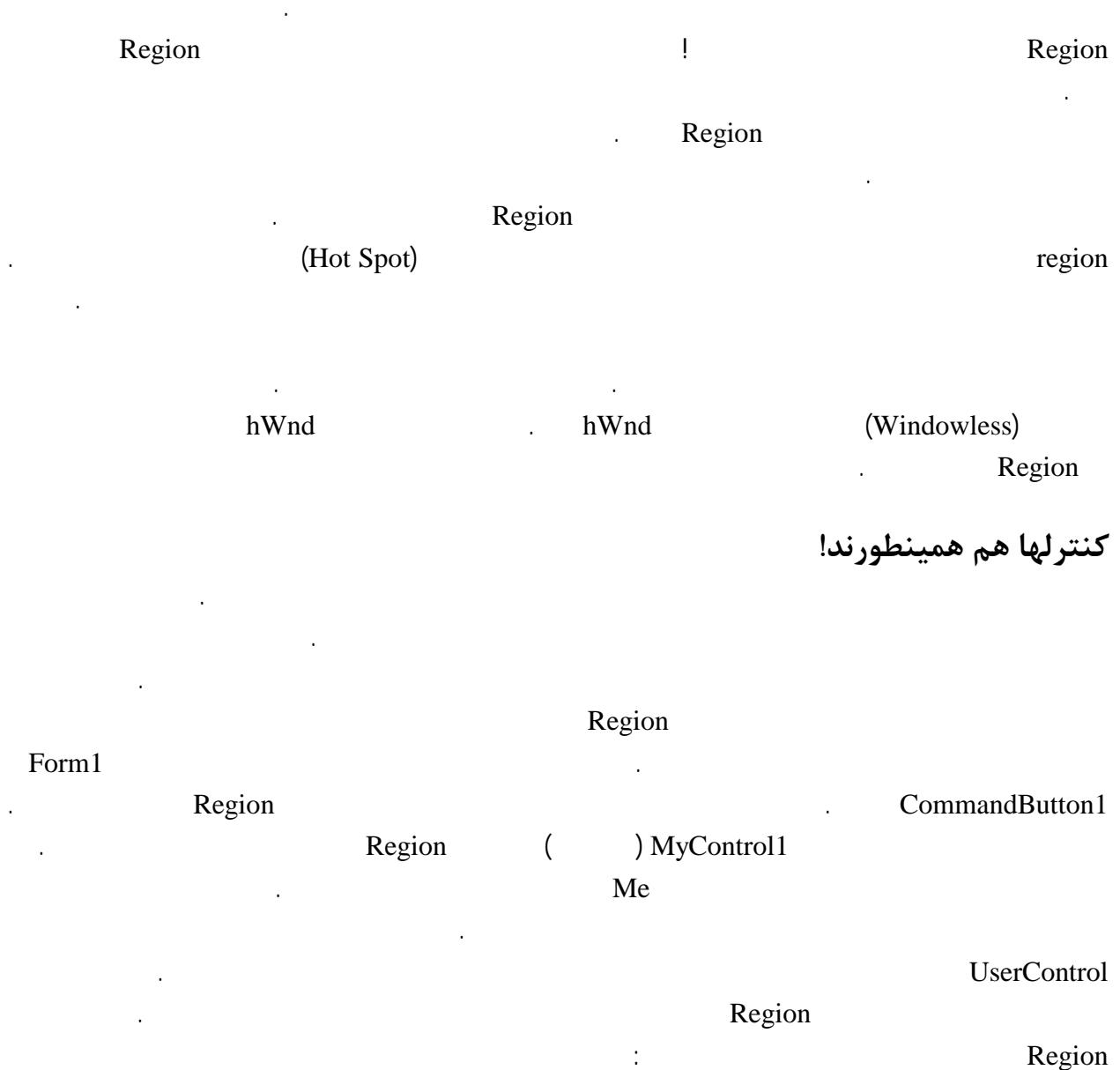
Private Sub Form_MouseDown(Button As Integer, _
    Shift As Integer, _
    x As Single, _
    y As Single)
    Select Case Button
        Case vbLeftButton
            If y < 300 Then
                'Allow the form to be moved by dragging
                Call ReleaseCapture
                Call SendMessage(Me.hwnd, WM_NCLBUTTONDOWN, _
                    HTCAPTION, 0&)
            End If
    End Select
End Sub

```





شکل ۸



کنترلها هم همینطورند!

```

Public Sub CreateEllipseFromWindow(ByVal lWidth As Long, _
    ByVal lHeight As Long, _
    ByVal lhWnd As Long)

```

```

Dim lRight As Long
Dim lBottom As Long
Dim hRgn As Long
lRight = lWidth / Screen.TwipsPerPixelX
lBottom = lHeight / Screen.TwipsPerPixelY
hRgn = CreateEllipticRgn(0, 0, lRight, lBottom)
SetWindowRgn lhWnd, hRgn, True
End Sub

```

```

        ×
        UserControl
        :      Resize
        UserControl
        Picture

```

```

Private Sub UserControl_Resize()
    With UserControl
        .Height = 40 * Screen.TwipsPerPixelY
        .Width = 40 * Screen.TwipsPerPixelX
        CreateEllipseFromWindow .Width, .Height, .hWnd
    End With
End Sub

```

```

        (opaque)      UserControl      BackStyle
        .
        .
        .
        (transparent) 0
        .
Caption      .(      ).
        .
        .

```



شکل ۹

```

(transparent) 0      UserControl      BackStyle      .      Region

```

سخنان عمومی

Region

Region

:

```
Public Sub CreateEllipticalRegion(ByVal lWidth As Long, _
                                ByVal lHeight As Long, _
                                ByVal lReduceXBy As Long, _
                                ByVal lReduceYBy As Long, _
                                ByVal lhWnd As Long)

    Dim lLeft As Long
    Dim lTop As Long
    Dim lRight As Long
    Dim lBottom As Long
    Dim hRgn As Long
    lLeft = lReduceXBy / Screen.TwipsPerPixelX
    lTop = lReduceYBy / Screen.TwipsPerPixelY
    lRight = (lWidth - lReduceXBy) / Screen.TwipsPerPixelX
    lBottom = (lHeight - lReduceYBy) / Screen.TwipsPerPixelY
    hRgn = CreateEllipticRgn(lLeft, lTop, lRight, lBottom)
    SetWindowRgn lhWnd, hRgn, True
End Sub
```

(lReduceYBy lReduceXBy)

(lHeight lWidth)

Region

(lhWnd)

Region

0

:

Region

```
Public Sub CreateRoundRectRegion(ByVal lWidth As Long, _
                                ByVal lHeight As Long, _
                                ByVal lCornerWidth As Long, _
                                ByVal lCornerHeight As Long, _
                                ByVal lhWnd As Long)

    Dim lRight As Long
    Dim lBottom As Long
    Dim lCornerX as Long
    Dim lCornerY as Long
    Dim hRgn As Long

    lRight = lWidth / Screen.TwipsPerPixelX
    lBottom = lHeight / Screen.TwipsPerPixelY
    lCornerX = lCornerWidth / Screen.TwipsPerPixelX
    lCornerY = lCornerHeight / Screen.TwipsPerPixelY
    hRgn = CreateRoundRectRgn(0, 0, lRight, lBottom, lCornerX, lCornerY)
    SetWindowRgn lhWnd, hRgn, True
End Sub
```

lCornerWidth)

(lCornerHeight

Region

```
Public Sub CreatePolygon(ByRef Points() As POINTAPI, _  
                        ByVal lhWnd As Long)  
    Dim hRgn    As Long  
  
    'Create a region from the points  
    hRgn = CreatePolygonRgn(Points(0), (UBound(Points) + 1), 2)  
    SetWindowRgn lhWnd, hRgn, True  
End Sub
```

درباره نویسنده:

منبع: <http://www.vbwm.com> سایت

مolf: دیل ای لهما

مترجم: جادوگر ویزوال بیسیک

(وبلاگ جادوی ویزوال بیسیک)

<http://vblog.persianblog.com>